

Assertive Technology creating accessible, adaptable living & working environments

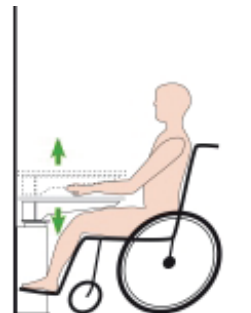
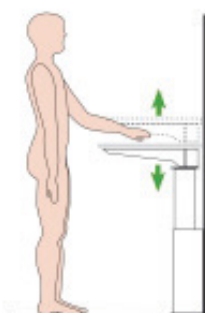
Food Technology | IT | Science Labs | Class Rooms | Libraries | Special Needs | Bathrooms



Education settings that focus on reducing barriers, encouraging learning and participation

Inclusive Living height adjustable system provides functional and practical solutions

Easy and safe to use - includes safety systems | Caters for varying needs - seated or standing positions
Promotes good ergonomic practise - comfortable height & reach | Used for new, existing applications & relocatable



Centerlift 960 Floor mounted and freestanding | Available in single or double pedestal models

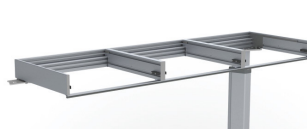
Assertive Technology helping to meet the needs of all students, staff and visitors

Food Technology | IT | Science Labs | Class Rooms | Libraries | Special Needs | Bathrooms



Baselift 6300H Height adjustable worktops enabling integration of cooktops and sinks

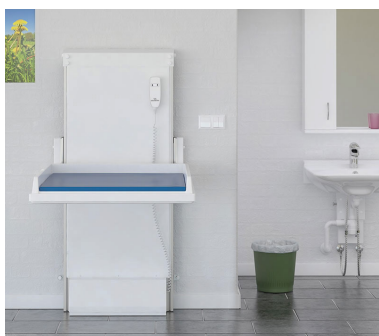
The **Baselift Series** of height adjustable worktop lifts are available in **WALL** mounted or **FLOOR** mounted systems.



Various sizes and configurations include **STRAIGHT** or **CORNER** models, with **Plusmodules** for extended length/widths.



Height Adjustable
Table Frame



Height Adjustable
Nursing Table



Height Adjustable
Washbasin Brackets