

TECHNICAL INFORMATION

Centerlift+ 970



Type: Floor-standing cabinet lift for kitchen island

Adjustability: Motorised, infinitely adjustable 30.0 cm. (10.0 to 40.0 cm, floor to top of frame).

Speed: 1.8 cm/sec.

Operation: Fixed button or remote control

Electrical connection: Plug for 230 V, max 2.5A

Connection of water and drainage: Connection is by means of flexible hoses:

Maximum load: 500 kg

IP-Class: IP 20

Frame depth: 53.6 or 83.6 cm

Fits cabinet depths: 56.0 to 105.0 cm

Fits cabinet widths: 100.0 to 200.0 cm (Total width: Cabinet width + 43.2 cm)

Fits cabinet height: 55.0 to 90.0 cm

Delivery modules: Cabinet beams, floor-standing motors including fittings for attachment to cabinet beams.

Fittings supplied: Brackets for fitting plinth.

Material: Cabinet beams, brackets for attaching cabinet beams and floor tiles in powder coating, (Alu-grey RAL 9006). Motors in Aluminium.



DIMENSIONS

The sketch shows an example with two cabinets, 60.0 cm wide, 57.2 cm high.

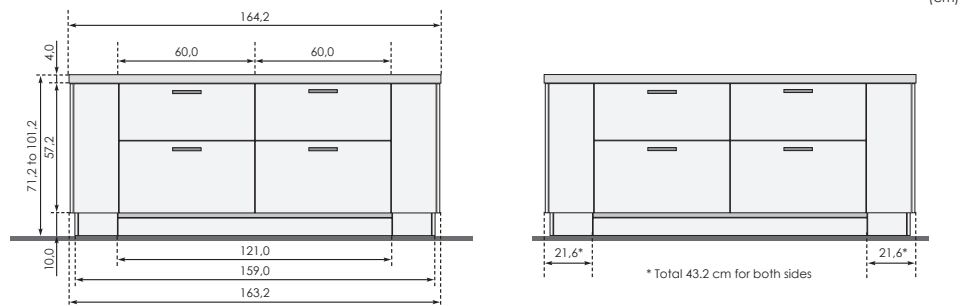
Cabinet dimensions:

Minimum cabinet height:
55.0 cm - adjustability: 69.0 to 99.0 cm

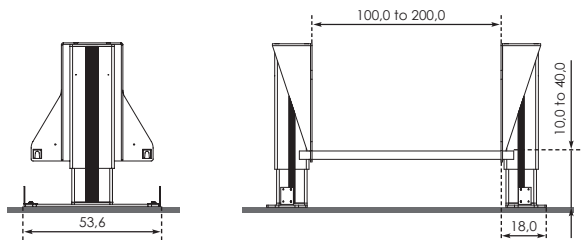
Maximum cabinet height:
90.0 cm - adjustability: 104.0 to 134.0 cm

Minimum cabinet width:
100.0 cm

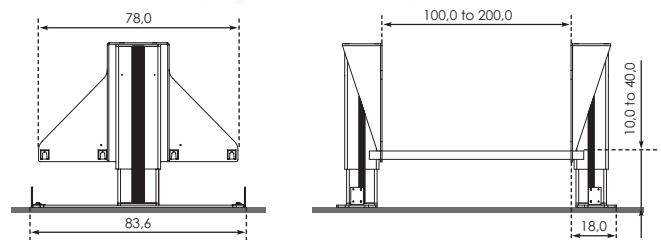
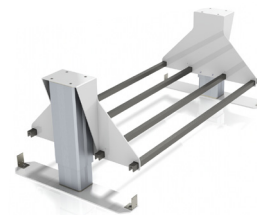
Maximum cabinet width:
200.0 cm



**Center lift+
for cabinet depths from 56.0 to 85.0 cm**



**Center lift+
for cabinet depths from 86.0 to 105.0 cm**

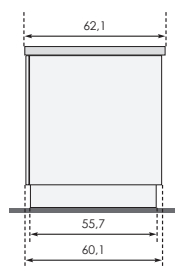


The sketch shows an example with cabinet depth of 56.5 cm

Permitted cabinet dimensions:

Minimum cabinet depth:
56.0 cm

Maximum cabinet depth:
85.0 cm

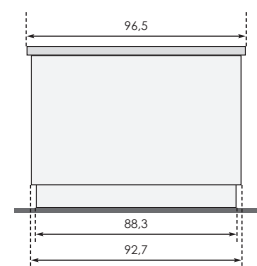


The sketch shows an example with cabinet depth of 56.5 + 33.0 cm

Permitted cabinet dimensions:

Minimum cabinet depth:
86.0 cm

Maximum cabinet depth:
105.0 cm





www.inclusiveliving.com.au
1300 304 330